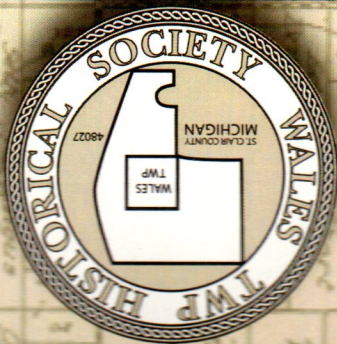


2010 CALENDAR

PAST AND PRESENT
1885-2010

WALE SCHOOLS OF ONE ROOM



CASTOR SCHOOL



LAMBS SCHOOL



BEACH SCHOOL



WALE CENTER SCHOOL



WALE HISTORICAL SOCIETY



Lynn School interior restoration - Goodells County Park



Goodells School, District 7 - Class of 1925



Wales School, District 9 - Class of 1925



CASTOR SCHOOL

DISTRICT 3 - CASTOR SCHOOL STOOD ON THE WEST SIDE OF CASTOR ROAD AT THE WEST END OF KITCHEN ROAD. IT IS NOW THE HOME OF THE WARD FAMILY.

JANUARY

NATIONAL BOOK MONTH

2010

SUNDAY	MONDAY	TUESDAY	WEDNESDAY	THURSDAY	FRIDAY	SATURDAY
					1 NEW YEAR'S DAY	2
3	4	5	6	7	8	9
10	11	12	13	14	15	16
17	18	19	20	21	22	23
24	25	26	27	28	29	30
31						

JAN 11, 1785: ALEXANDER HAMILTON'S BIRTHDAY - JAN 17, 1912: NEW MEXICO ENTERS THE UNION - JAN 19, 1809 EDGAR ALLEN POE BORN
 JAN 23, 1789 - GEORGETOWN UNIVERSITY EST. - JAN 24, 1848: GOLD DISCOVERED IN CALIFORNIA - JAN 26, 1837: MICHIGAN ENTERS THE UNION



BEACH SCHOOL

DISTRICT 2 - BEECH SCHOOL WAS LOCATED ON THE EAST SIDE OF PARKS, JUST SOUTH OF LAMBS ROAD. SOME TIME BETWEEN 1884 AND 1897 IT WAS MOVED TO THE NORTHEAST CORNER OF LAMBS AND PALMS ROADS.

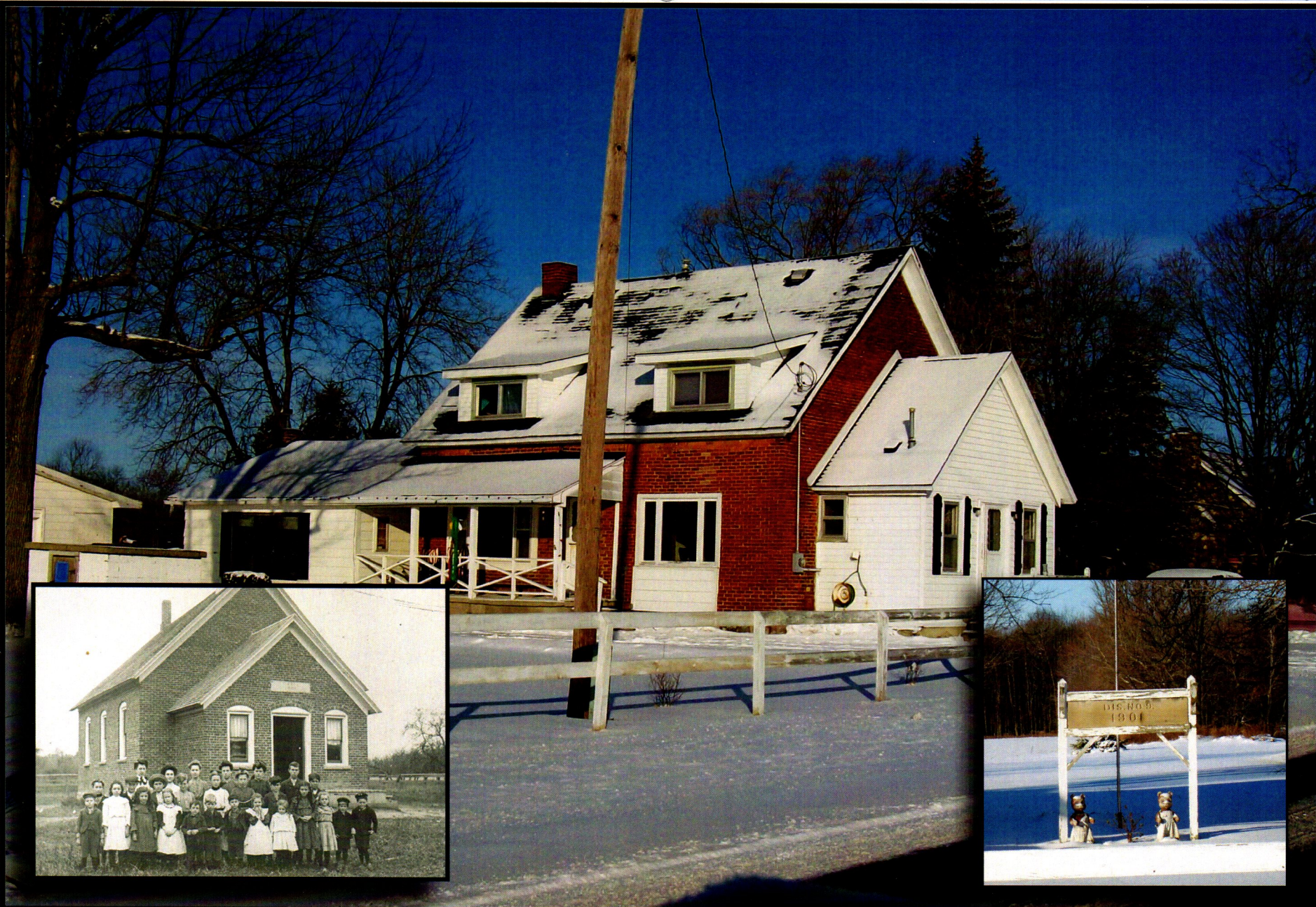
FEBRUARY

BLACK HISTORY MONTH

2010

SUNDAY	MONDAY	TUESDAY	WEDNESDAY	THURSDAY	FRIDAY	SATURDAY
	1	2 GROUND HOG DAY	3	4	5	6
7	8	9	10	11	12 LINCOLN'S BIRTHDAY	13
14 VALENTINE'S DAY	15	16 PRESIDENT'S DAY	17 ASH WEDNESDAY	18	19	20
21	22 WASHINGTON'S BIRTHDAY	23	24	25	26	27
28						

FEB 1, 1838: UNDERGROUND RAILROAD ESTABLISHED - FEB. 12, 1809: ABRAHAM LINCOLN BORN - FEB. 15, 1820: SUSAN B. ANTHONY'S BIRTHDAY
FEB. 18, 1930: PLANET PLUTO DISCOVERED - FEB 23, 1836: BATTLE OF THE ALAMO BEGINS - FEB. 11, 1847: THOMAS EDISON'S BIRTHDAY



DISTRICT 9 - WALES CENTER SCHOOL WAS LOCATED ON THE WEST SIDE OF WALES CENTER ROAD, NORTH OF LAMBS ROAD. IT IS NOW THE HOME OF THE SWORD FAMILY.

WALES CENTER SCHOOL

MARCH

WOMEN'S HISTORY MONTH

2010

SUNDAY	MONDAY	TUESDAY	WEDNESDAY	THURSDAY	FRIDAY	SATURDAY
	1	2	3	4	5	6
7	8	9	10	11	12	13
14 DAYLIGHT SAVING'S TIME BEGINS	15	16	17 ST. PATRICK'S DAY	18	19	20
21	22	23	24	25	26	27
28	29	30	31			

MAR. 3, 1931: THE STAR-SPANGLED BANNER, WRITTEN BY FRANCIS SCO KEY, OFFICIALLY BECAME THE NATIONAL ANTHEM
 MAR. 13, 1781: URANUS DISCOVERED - MAR. 14, 1879: ALBERT EINSTEIN'S BIRTHDAY



THORNTON SCHOOL

DISTRICT 6 - THORNTON SCHOOL, STOOD NEAR SPARLING ROAD IN THE VILLAGE OF THORNTON, ON THE BORDER OF KIMBALL AND WALES TOWNSHIPS.

APRIL

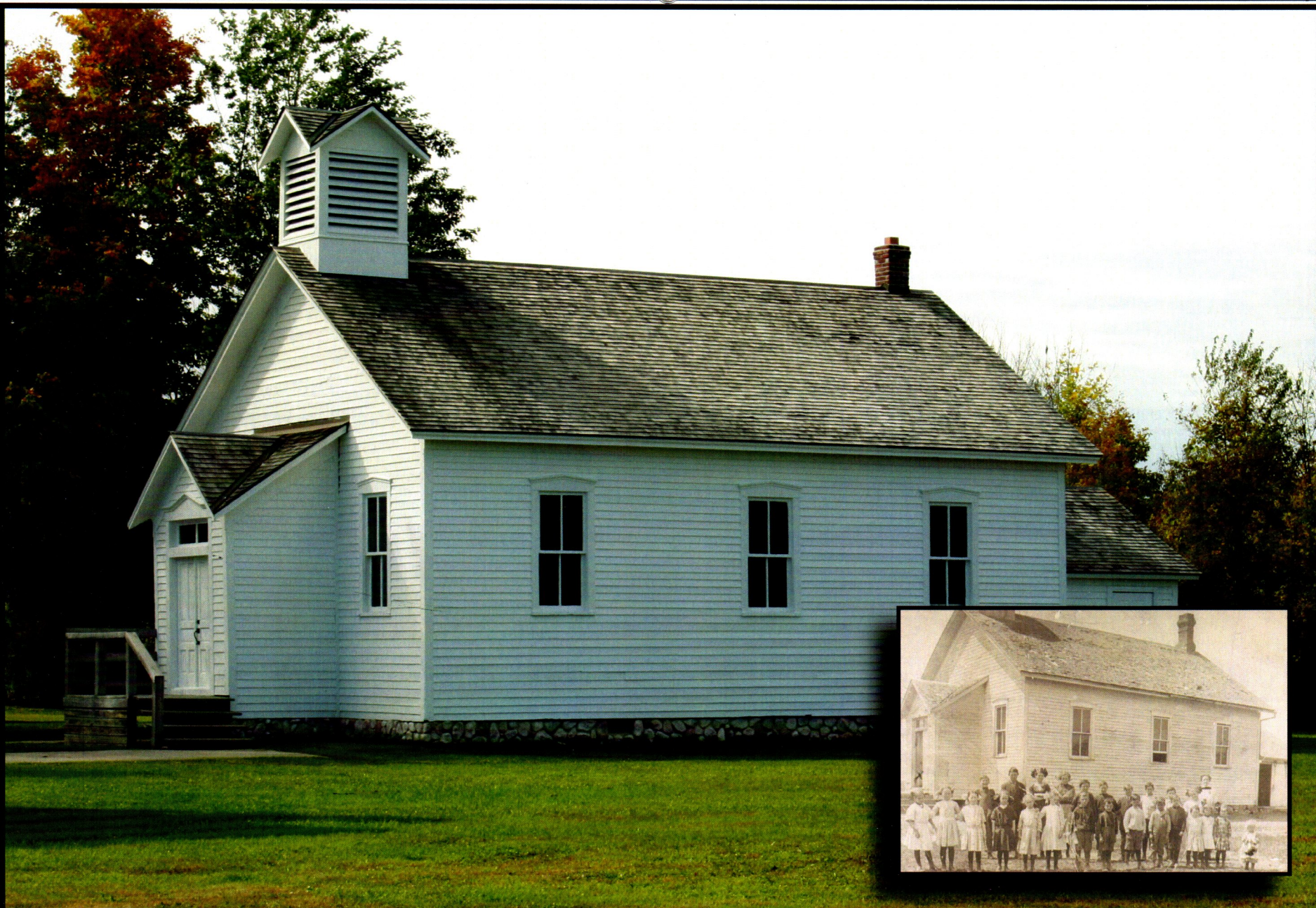
NATIONAL POETRY MONTH

2010

SUNDAY	MONDAY	TUESDAY	WEDNESDAY	THURSDAY	FRIDAY	SATURDAY
				1	2	3
4	5	6	7	8	9	10
PALM SUNDAY						
11	12	13	14	15	16	17
EASTER						
18	19	20	21	22	23	24
25	26	27	28	29	30	

APR 1: APRIL FOOL'S DAY - APR 13, 1743: THOMAS JEFFERSON'S BIRTHDAY
 APR 15, 1452: LEONARDO DA VINCI'S BIRTHDAY - APR 22: EARTH DAY - APR 23: ARBOR DAY





LYNN SCHOOL

BUILT IN 1885 IN LYNN TOWNSHIP, MOVED TO YALE SCHOOL CAMPUS IN 1968, IT SERVED AS THE HERITAGE EXHIBITION SCHOOL UNTIL IT WAS RELOCATED TO THE GOODELLS COUNTY PARK IN 1992. IT WAS RESTORED IN 2008 BY THE SCC PARKS AND RECREATION



MAY

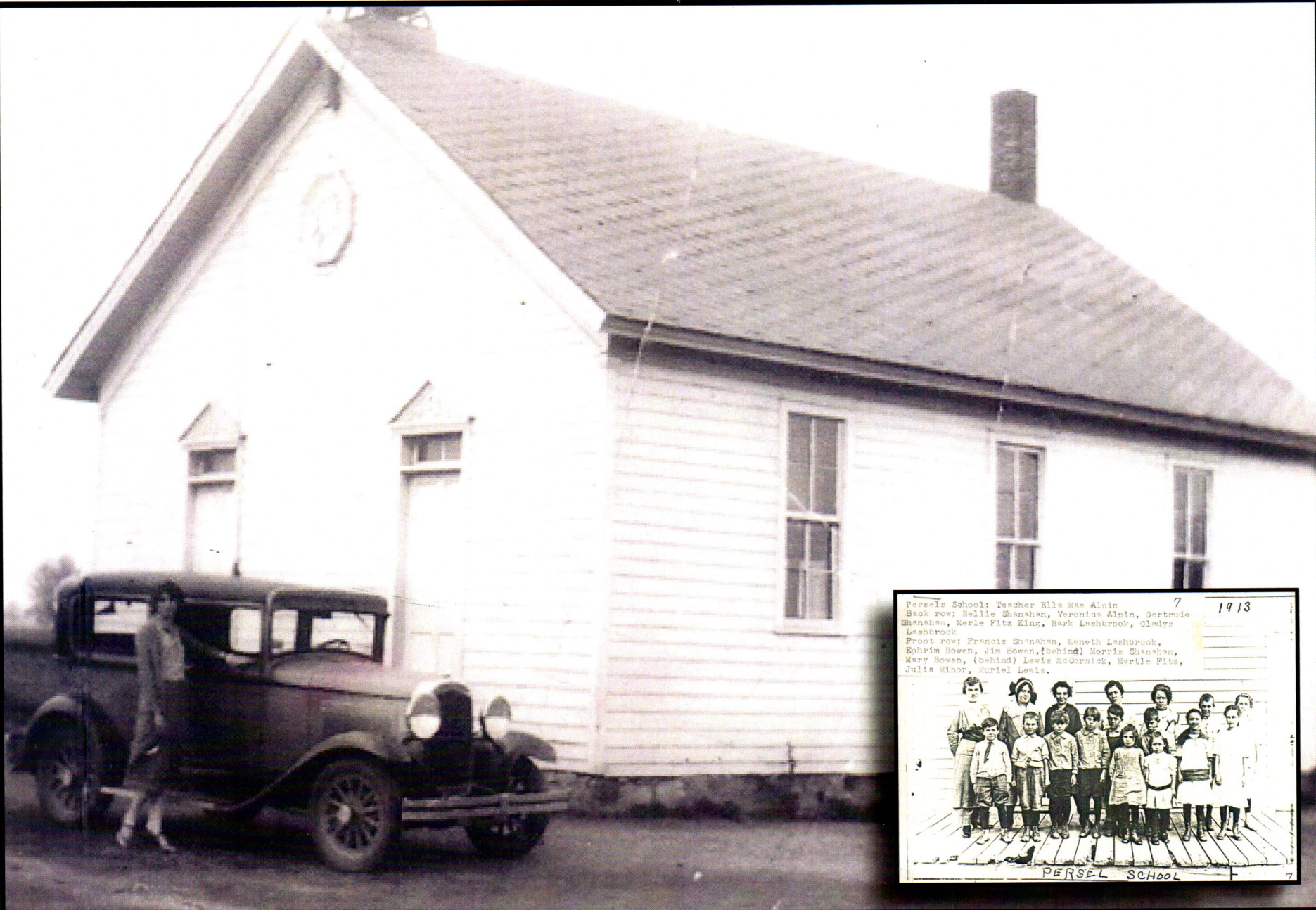
BETTER HEARING AND SPEECH MONTH

2010



SUNDAY	MONDAY	TUESDAY	WEDNESDAY	THURSDAY	FRIDAY	SATURDAY
						1
2	3	4	5	6	7	8
9	10	11	12	13	14	15
MOTHER'S DAY						
16	17	18	19	20	21	22
23	24	25	26	27	28	29
30	31					

MAY 1: MAY DAY - MAY 5: CINCO DE MAYO - MAY 12, 1820: FLORENCE NIGHTINGALE'S BIRTHDAY
MAY 22, 1859: SIR ARTHUR CONAN DOYLE'S BIRTHDAY - MAY 29, 1953: THE FIRST PEOPLE CLIMB MT. EVEREST



Persel School: Teacher Ella Mae Albin
 Back row: Nellie Shenshen, Veronica Albin, Gertrude Shenshen, Kerle Pittz King, Mark Lashbrook, Gladys Lashbrook
 Front row: Francis Shenshen, Kenneth Lashbrook, Sylvia Bowen, Jim Bowen, (behind) Morris Shenshen, Mary Bowen, (behind) Lewis McCormick, Myrtle Pittz, Julie Minor, Muriel Lewis.
 1913
 PERSEL SCHOOL

PERSEL SCHOOL

DISTRICT 6 - PERSEL SCHOOL, WAS LOCATED ON THE EAST SIDE OF FITZ ROAD BETWEEN SMITH'S CREEK AND MARQUETTE ROADS. IT WAS EVENTUALLY TORN DOWN, HOWEVER ARTIFACTS WERE PRESERVED BY MR. ROSS FITZ.

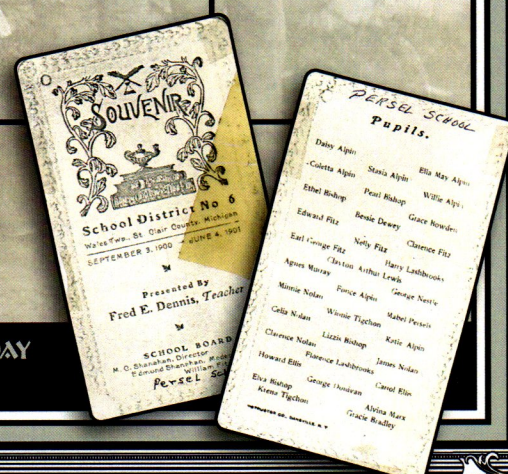
JUNE

NATIONAL HUNGER AWARENESS MONTH - LUZO-BRAZILIAN MONTH

2010

SUNDAY	MONDAY	TUESDAY	WEDNESDAY	THURSDAY	FRIDAY	SATURDAY
		1	2	3	4	5
6	7	8	9	10	11	12
13	14 FLAG DAY	15	16	17	18	19
20 FATHER'S DAY	21	22	23	24	25	26
27	28	29	30			

JUNE 12, 1939: THE BASEBALL HALL OF FAME OPENS - JUN. 13, 1865: WILLIAM BUTLER YEATS BIRTHDAY
 JUNE 21: THE SUMMER SOLSTICE - JUN. 27, 1880: HELEN KELLER'S BIRTHDAY





CAMERON SCHOOL

DISTRICT 10 - CAMERON SCHOOL, OR SCHOOL IN THE WOODS, WAS ON THE SOUTHEAST CORNER OF YAGER AND NOLAN ROADS. ONLY THE FOUNDATION REMAINS TODAY. WAS IT MOVED AND OCCUPIED?

JULY

NATIONAL CULINARY ARTS MONTH

2010

SUNDAY	MONDAY	TUESDAY	WEDNESDAY	THURSDAY	FRIDAY	SATURDAY
				1	2	3
4	5	6	7	8	9	10
INDEPENDENCE DAY						
11	12	13	14	15	16	17
EASTER						
18	19	20	21	22	23	24
25	26	27	28	29	30	31

JULY 1-3, 1863: BATTLE OF GETTYSBURG - JULY 11, 1767: JOHN QUINCY ADAMS BORN - JULY 16, 1945: FIRST ATOMIC BOMB DETONATED IN NEW MEXICO
JULY 24, 1897: AMELIA EARHART'S BIRTHDAY - JULY 26, 1788: NEW YORK ENTERS THE UNION - JULY 29, 1890: VINCENT VAN GOGH DIES



DISTRICT 8 - MUDGE SCHOOL WAS LOCATED ON THE NORTH SIDE OF CARD ROAD WEST OF MAYER ROAD. IN 1884 IT WAS CONSOLIDATED WITH THE BEACH SCHOOL, ON PARKS ROAD.

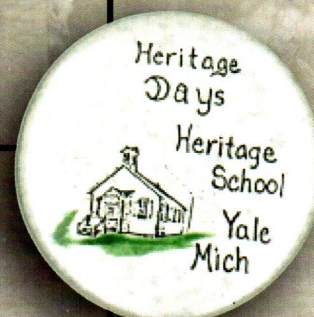
MUDGE SCHOOL

AUGUST

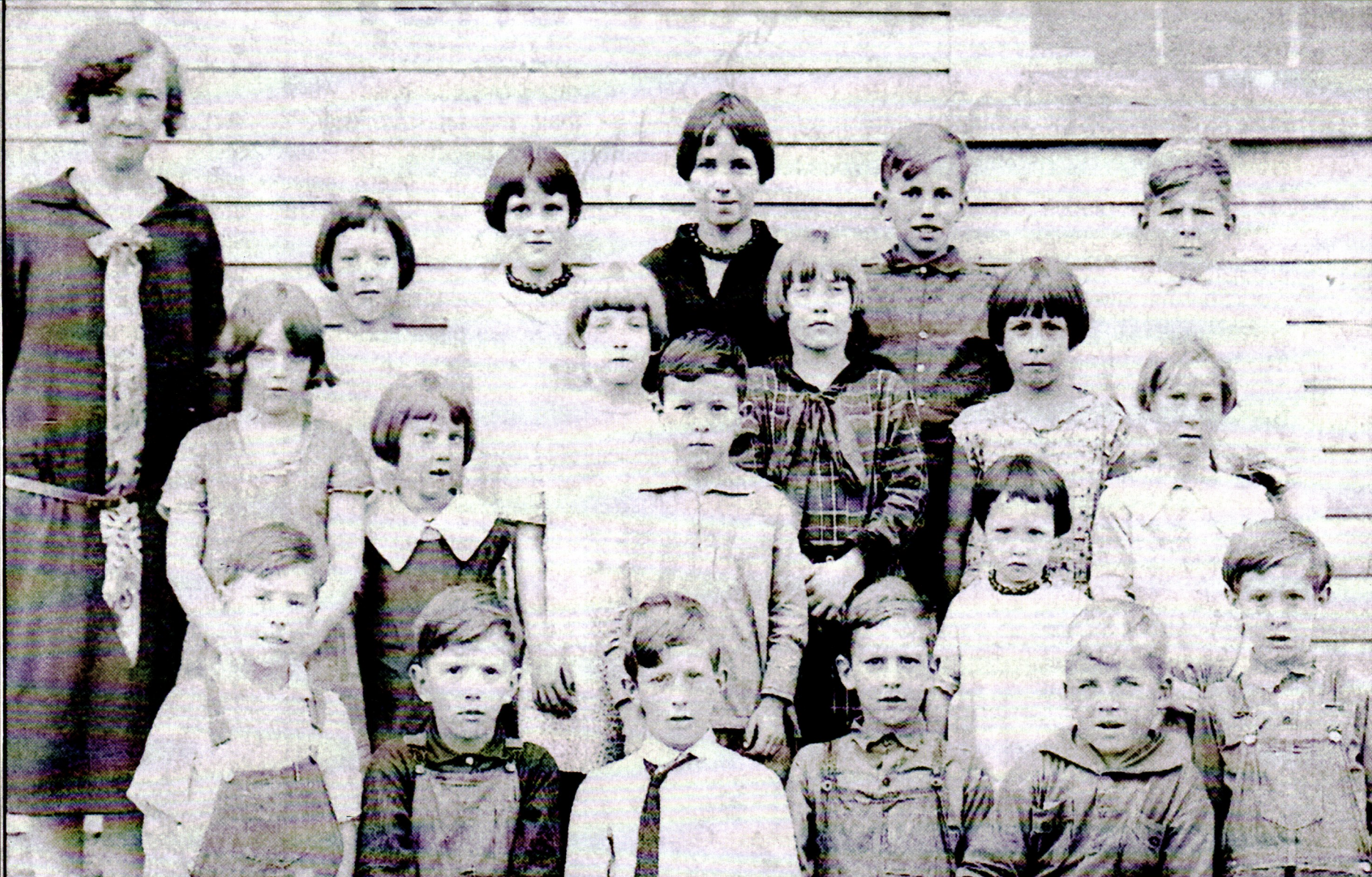
NATIONAL POETRY MONTH

2010

SUNDAY	MONDAY	TUESDAY	WEDNESDAY	THURSDAY	FRIDAY	SATURDAY
1	2	3	4	5	6	7
8	9	10	11	12	13	14
15	16	17	18	19	20	21
22	23	24	25	26	27	28
29	30	31				



AUG 2 1943: PT-109, COMMANDED BY LT. JOHN F. KENNEDY, SINKS OFF THE SOLOMON ISLANDS - AUG 17, 1786: DAVY CROCKETT'S BIRTHDAY
AUG 21 1959: HAWAII ADMITTED TO THE UNION - AUG 26, 1910: MOTHER TERESA'S BIRTHDAY



DISTRICT 5 - BERNARD SCHOOL STOOD ON SMITHS CREEK ROAD EAST OF WALES RIDGE. IT IS NO LONGER STANDING.

DISTRICT 4 - KENDALL SCHOOL STOOD ON THE NORTHWEST CORNER OF DUNN AND FOX ROADS. IT WAS DEMOLISHED DURING CONSTRUCTION OF I-69.

BERNARD SCHOOL

KENDALL SCHOOL

SEPTEMBER

NATIONAL HISPANIC HERITAGE MONTH

2010

SUNDAY	MONDAY	TUESDAY	WEDNESDAY	THURSDAY	FRIDAY	SATURDAY
			1	2	3	4
5	6	7	8	9	10	11
12	LABOR DAY	14	15	16	17	18
GRANDPARENT'S DAY	20	21	22	23	24	25
26	27	28	29	30		

SEP 1, 1945: JAPAN'S FORMAL SURRENDER ENDING WW II - SEP 17, 1787: U.S. CONSTITUTION SIGNED - SEP 17, 1862: BATTLE OF ANTIETAM
SEP 15, 1857: WILLIAM TAFT'S BIRTHDAY - SEP 5, 1774: THE FIRST CONTINENTAL CONGRESS ESTABLISHED



GOODELLS SCHOOL

DISTRICT 7 - GOODELLS SCHOOL WAS LOCATED ON THE EAST SIDE OF WALES CENTER ROAD, SOUTH OF MORRIS ROAD. IT WAS OCCUPIED BY HOPE LUTHERAN CHURCH UNTIL IT WAS DEMOLISHED IN 1968 TO MAKE WAY FOR I-69.

OCTOBER

NATIONAL AIDS AWARENESS MONTH

2010

SUNDAY	MONDAY	TUESDAY	WEDNESDAY	THURSDAY	FRIDAY	SATURDAY
					1	2
3	4	5	6	7	8	9
10	11	12	13	14	15	16
17	18	19	20	21	22	23
24	25	26	27	28	29	30
31 HALLOWEEN						

OCT 2, 1908: HENRY FORD INTRODUCES THE MODEL T AUTOMOBILE - OCT 4, 1895: BUSTER KEATON'S BIRTHDAY
OCT 11, 1884: ELEANOR ROOSEVELT'S BIRTHDAY - OCT 21, 1879: THOMAS EDISON INVENTS THE WORKING ELECTRIC LIGHTBULB



QUONSET HUT

QUONSET HUT - BUILT IN 1942 IN GOODELLS COUNTY PARK, IT WAS USED BY WALES TWP ONE ROOM SCHOOLS FOR GRADUATION CEREMONIES, SOCIAL ACTIVITIES, AND ATHLETIC EVENTS. IT STILL STANDS NEAR AN ARTESIAN WELL THAT HAS BEEN FLOWING SINCE 1924

NOVEMBER

NATIONAL AMERICAN INDIAN HERITAGE MONTH

2010

SUNDAY	MONDAY	TUESDAY	WEDNESDAY	THURSDAY	FRIDAY	SATURDAY
	1	2 ELECTION DAY	3	4	5	6
7	8	9	10	11 VETERAN'S DAY	12	13
14	15	16	17	18	19	20
21	22	23	24	25	26 THANKSGIVING	27
28	29	30				

NOV 1, 1512: MICHELANGELO'S SISTINE CHAPEL PAINTINGS FIRST EXHIBITED - NOV 6, 1854 JOHN PHILLIPS SOUSA'S BIRTHDAY
NOV 7, 1893: COLORADO GRANTS WOMEN THE RIGHT TO VOTE - NOV 17, 1869: THE SUEZ CANAL OPENS



LAMBS SCHOOL

DISTRICT 1 - LAMBS SCHOOL, ORIGINALLY ON COVE RD., NORTH OF LAMBS METHODIST EPISCOPAL CHURCH. IT WAS THEN MOVED TO THE SOUTHWEST CORNER OF MASTERS AND FOX ROADS. IT IS NOW THE HOME OF DANIEL AND LENORE JACASKIE.

DECEMBER

UNIVERSAL HUMAN RIGHTS MONTH

2010

SUNDAY	MONDAY	TUESDAY	WEDNESDAY	THURSDAY	FRIDAY	SATURDAY
			1	2	3	4
5	6	7	8	9	10	11
12	13	14	15	16	17	18
19	20	21	22	23	24	25
26	27	28	29	30	31	
		WINTER BEGINS			CHRISTMAS EVE	CHRISTMAS DAY
					NEW YEAR'S EVE	

DEC. 1, 1955: ROSA PARKS IS JAILED IN MONTGOMERY - DEC 7, 1941: JAPAN BOMBS PEARL HARBOR - DEC 13, 1863: BATTLE OF FREDERICKSBURG
DEC. 16, 1897: LUDWIG VON BEETHOVEN'S BIRTHDAY - DEC. 16, 1773: THE BOSTON TEA PARTY