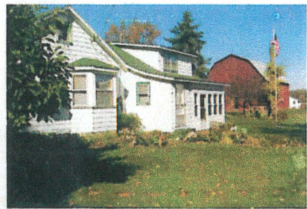


WALES HISTORICAL SOCIETY

2008 CALENDAR



WALES TOWNSHIP CENTENNIAL FARMS PLUS



January
Hart Farm



February
Schwartz-Hoskins Farm



March
Shirkey Farm



April
Lashbrook-Coyle Farm



May
Campbell Farm



June
Sullivan-Fox Farm



July
Hartson Farm



August
Crowley-Wendling Farm



September
Cowles Farm



October
Fitz Farm



November
Mudge Farm



December
St. Clair County Poor Farm



Hart Farm

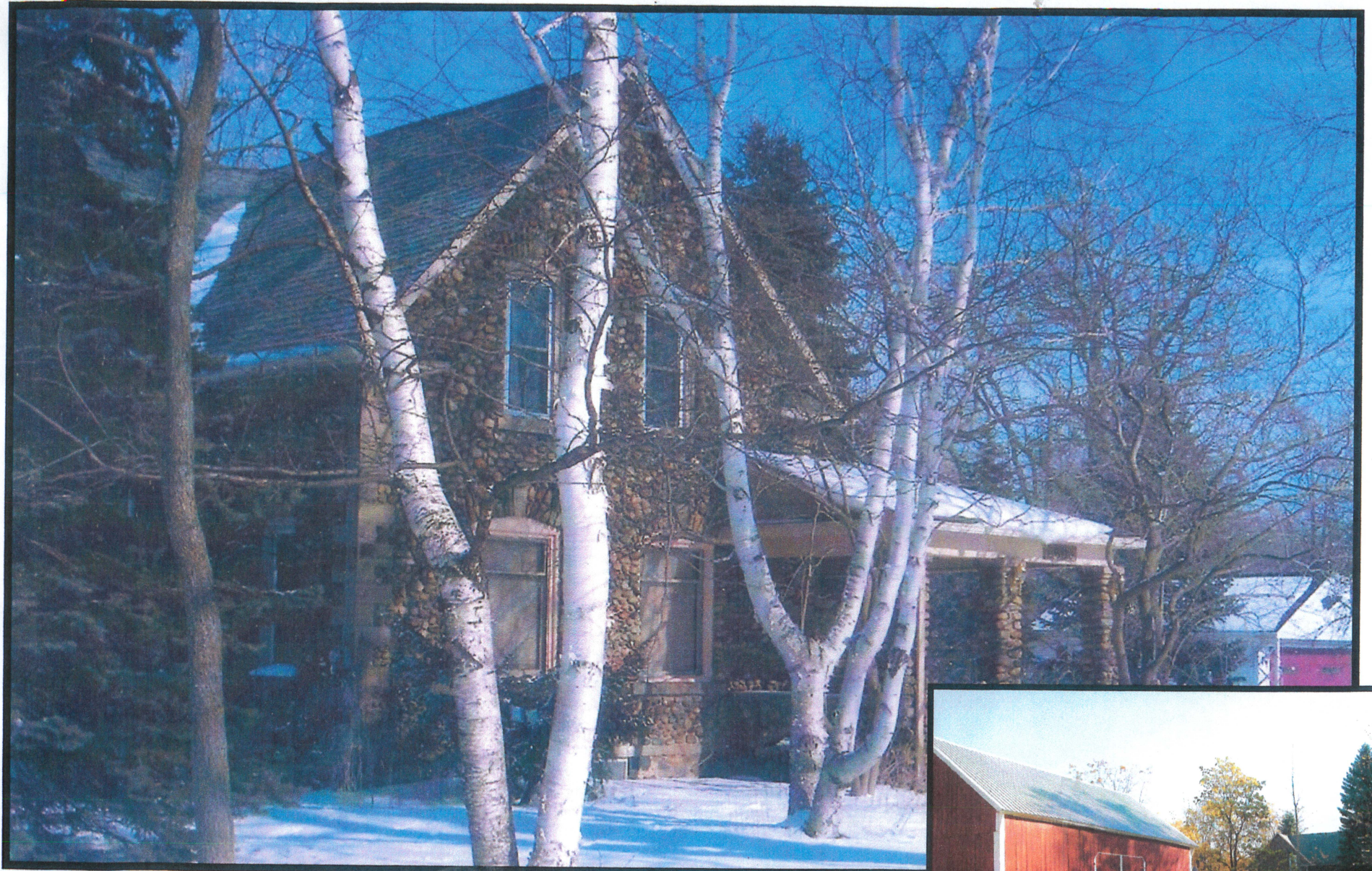
Originally owned by Samuel and Rebecca Hart. **Main photo:** Sam Hart and family in 1905.
Right inset: Barn which was moved to its current site in 1879.





January 2008

SUNDAY	MONDAY	TUESDAY	WEDNESDAY	THURSDAY	FRIDAY	SATURDAY
		1 New Year's Day	2	3	4	5
6	7	8	9	10	11	12
13	14	15	16	17	18	19
20	21 Martin Luther King Jr. Day	22	23	24	25	26
27	28	29	30	31		



Schwartz-Hoskins Farm

Established by Solon and Lula Schwartz. **Main photo:** Stone home built in 1914 by Solon Schwartz at 8608 Morris Road. Currently owned by Yobany and Colleen Pardo. **Right inset:** Original barn built in 1904 at a cost of \$1000.





February 2008

SUNDAY	MONDAY	TUESDAY	WEDNESDAY	THURSDAY	FRIDAY	SATURDAY
					1	2 Groundhog Day
3	4	5	6	7	8	9
10	11	12	13	14 Valentine's Day	15	16
17	18 Presidents' Day	19	20	21	22	23
24	25	26	27	28	29	



Shirkey Farm

The land was granted to Joseph Shirkey in 1837 by President Martin Van Buren. **Main photo:** Original house built in 1849; remodeled in 1905. **Right inset:** Farm barns.





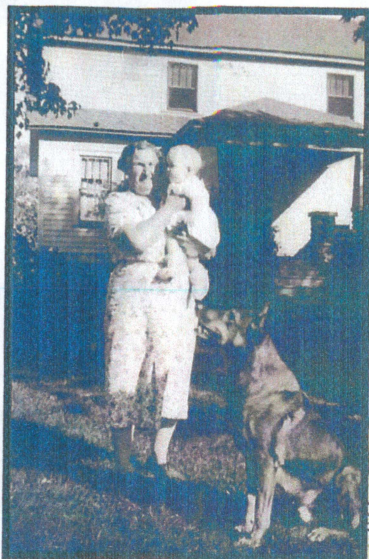
Shirkey Farm

The land was granted to Joseph Shirkey in 1837 by President Martin Van Buren. **Main photo:** Original house built in 1849; remodeled in 1905. **Right inset:** Farm barns.



March 2008

SUNDAY	MONDAY	TUESDAY	WEDNESDAY	THURSDAY	FRIDAY	SATURDAY
						1
2	3	4	5	6	7	8
9	10	11	12	13	14	15
Daylight Savings Time Begins						
16	17	18	19	20	21	22
Palm Sunday	St. Patrick's Day				Good Friday	
23/30	24/31	25	26	27	28	29
Easter (23rd)						



Lashbrook-Coyle Farm

Established by Elias Lashbrook in 1894; original house built in 1896. **Main photo:** House rebuilt in 1930. **Left inset:** Grandma Lashbrook. **Right inset:** Barn built in 1911.



April 2008

SUNDAY	MONDAY	TUESDAY	WEDNESDAY	THURSDAY	FRIDAY	SATURDAY
		1	2	3	4	5
6	7	8	9	10	11	12
13	14	15	16	17	18	19
20	21	22	23	24	25	26
Passover						
27	28	29	30			



Campbell Farm

Original farm of 480 acres homesteaded by Archibald Campbell in 1879 and currently owned by Bessie Campbell. **Main photo:** Current house at 2317 Goodells Road, built in 1924.

Right inset: Original barn built in 1904.





May 2008

SUNDAY	MONDAY	TUESDAY	WEDNESDAY	THURSDAY	FRIDAY	SATURDAY
					2	3
4	5	6	7	8	9	10
	12	13	14	15	16	17
18	19	20	21	22	23	24
25	26	27	28	29	30	31



Sullivan-Fox Farm

Original farm built by George and Jane Sullivan in 1875. **Main photo:** Original home. **Right inset:** Modern home owned by Carl and Margaret (Fox) Sullivan at 9769 Alpine Road, the site of the original barn.





June 2008

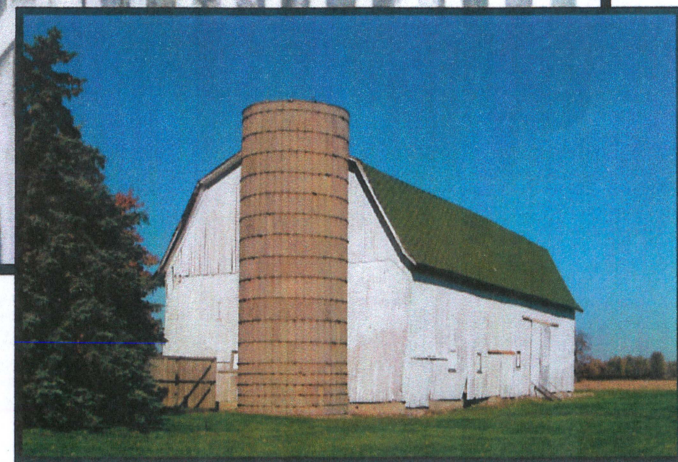
SUNDAY	MONDAY	TUESDAY	WEDNESDAY	THURSDAY	FRIDAY	SATURDAY
1	2	3	4	5	6	7
8	9	10	11	12	13	14
15 Father's Day	16	17	18	19	20	21 Summer Begins
22	23	24	25	26	27	28
29	30					



Shirkey Farm


The land was granted to Joseph Shirkey in 1837 by President Martin Van Buren. **Main photo:** Original house built in 1849; remodeled in 1905. **Right inset:** Farm barns.





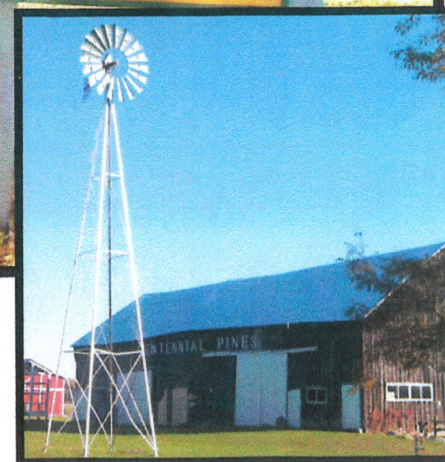
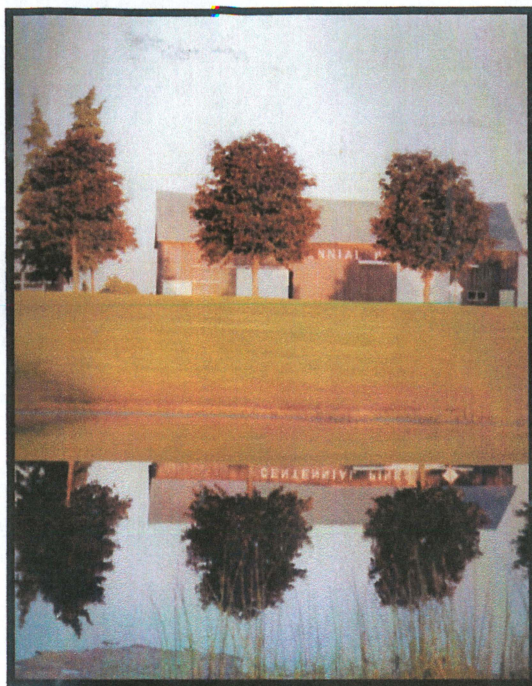
Hartson Farm

Established by William Hartson in 1856, 160 acres. **Main photo:** Original home and Hartson family c. 1900. **Left inset:** Current House built in 1910 by Francis Hartson at 9582 Alpine Road. **Right inset:** Original barn.



July 2008

SUNDAY	MONDAY	TUESDAY	WEDNESDAY	THURSDAY	FRIDAY	SATURDAY
		1	2	3	4	5
6	7	8	9	10	Independence Day	12
13	14	15	16	17	18	19
20	21	22	23	24	25	26
27	28	29	30	31		



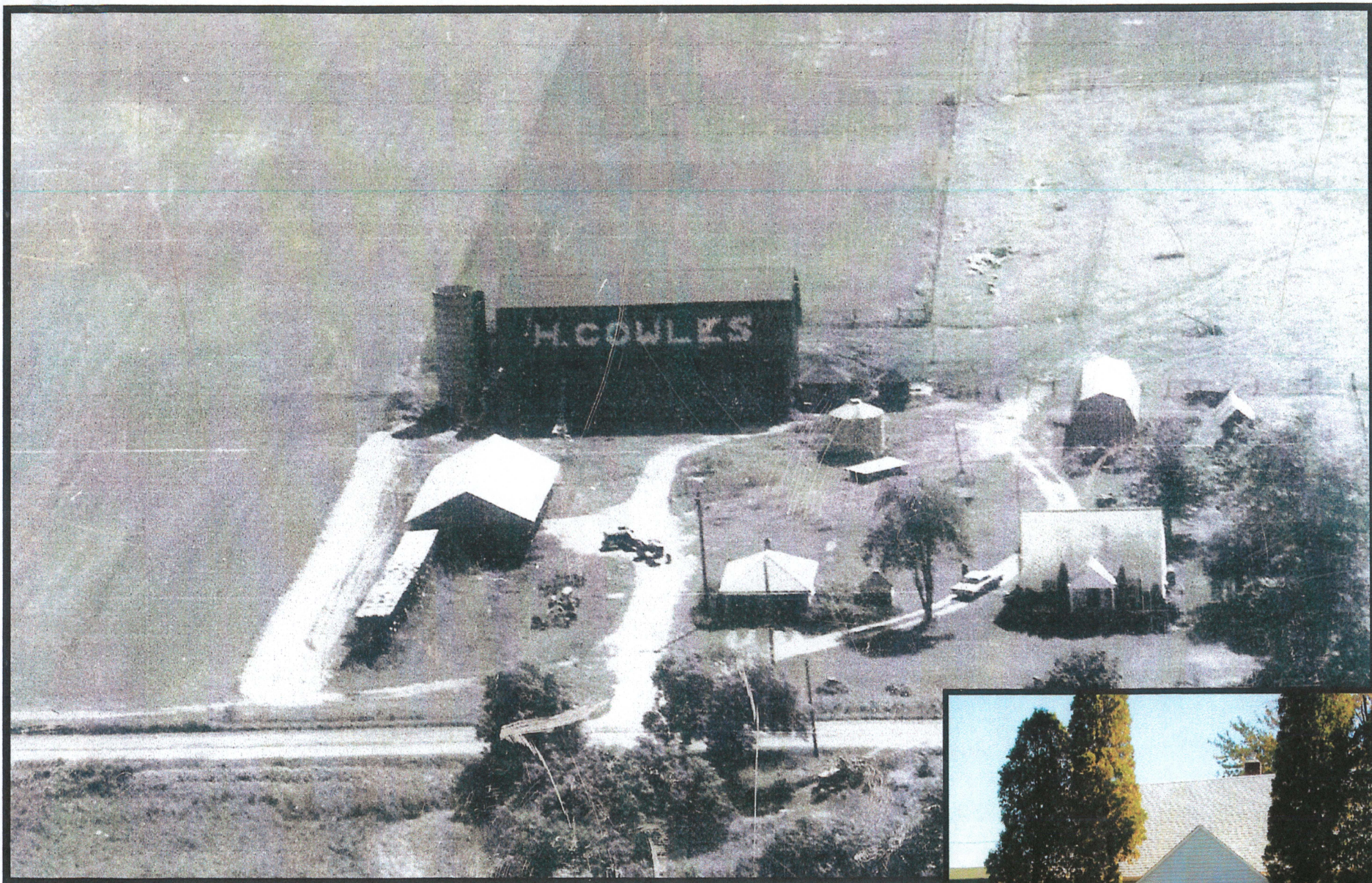
Crowley-Wendling Farm

Established by John Crowley in 1863. **Main photo:** Original house located at 2775 Bricker Road. **Left inset:** Centennial Pines Tree Farm established in 1959 (original barn). Currently owned by Helen Reid Wendling and family.



August 2008

SUNDAY	MONDAY	TUESDAY	WEDNESDAY	THURSDAY	FRIDAY	SATURDAY
					1	2
3	4	5	6	7	8	9
10	11	12	13	14	15	16
17	18	19	20	21	22	23
24/31	25	26	27	28	29	30



Cowles Farm

Established by Harvey and Emma Cowles in 1882. Demster Cowles was director of St. Clair County Poor Farm in 1914. **Main photo:** Aerial photo taken in 1960s. **Right inset:** Current house, owned by Linda Cowles Elliott and family.





September 2008

SUNDAY	MONDAY	TUESDAY	WEDNESDAY	THURSDAY	FRIDAY	SATURDAY
	1 <small>Labor Day</small>	2	3	4	5	6
7	8	9	10	11	12	13
14	15	16	17	18	19	20
21	22 <small>Fall Begins</small>	23	24	25	26	27
28	29	30				



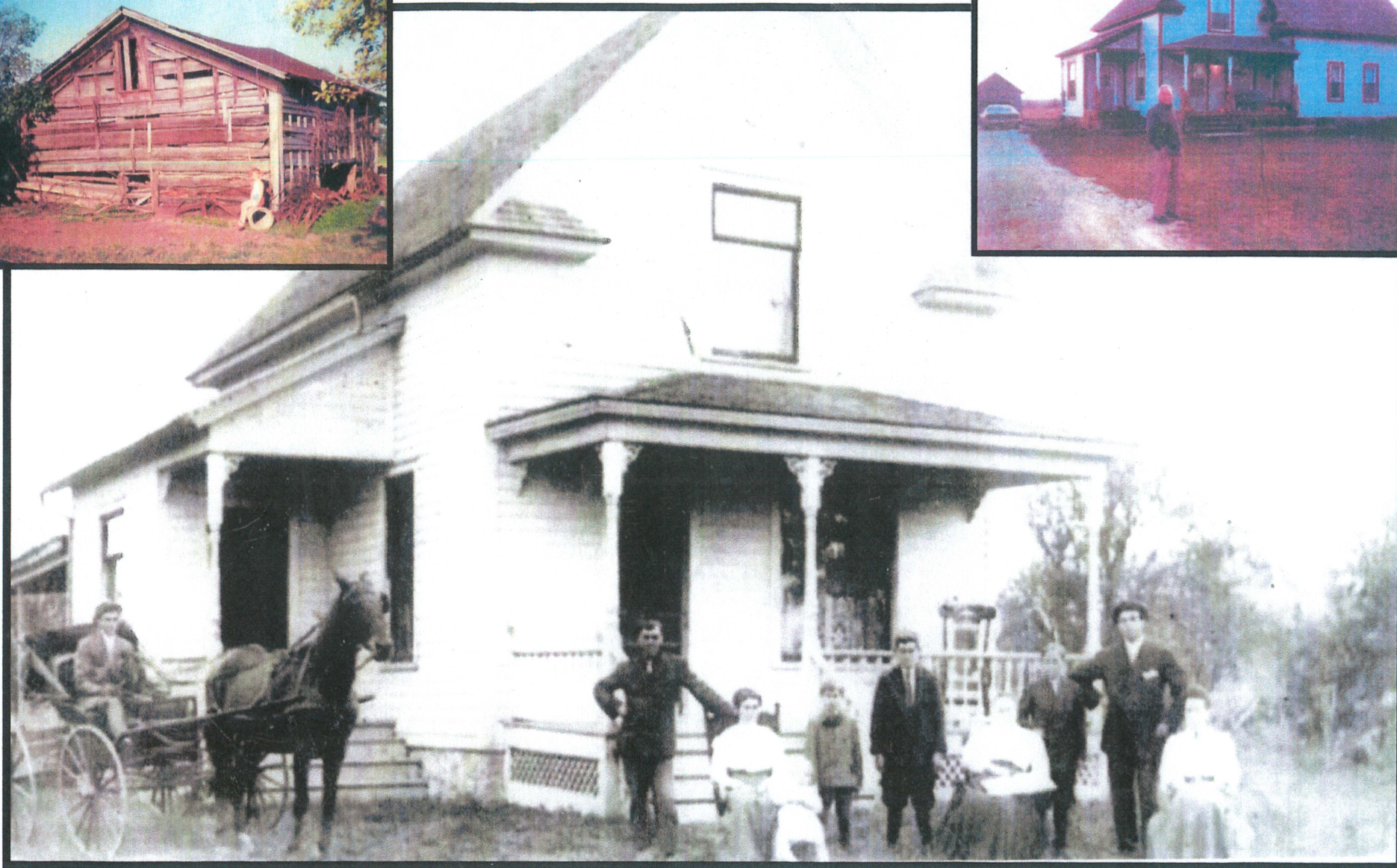
Fitz Farm

Established by Charles Edward Fitz in 1852. **Main photo:** Home at 9385 Marquette, occupied by Dave Fitz and family (6th generation). **Right inset:** Original house which was remodeled in 1913 by Charles and Mary Fitz.



October 2008

SUNDAY	MONDAY	TUESDAY	WEDNESDAY	THURSDAY	FRIDAY	SATURDAY
			1	2	3	4
5	6	7	8	9	10	11
12	13 Columbus Day	14	15	16	17	18
19	20	21	22	23	24	25
26	27	28	29	30	31 Halloween	



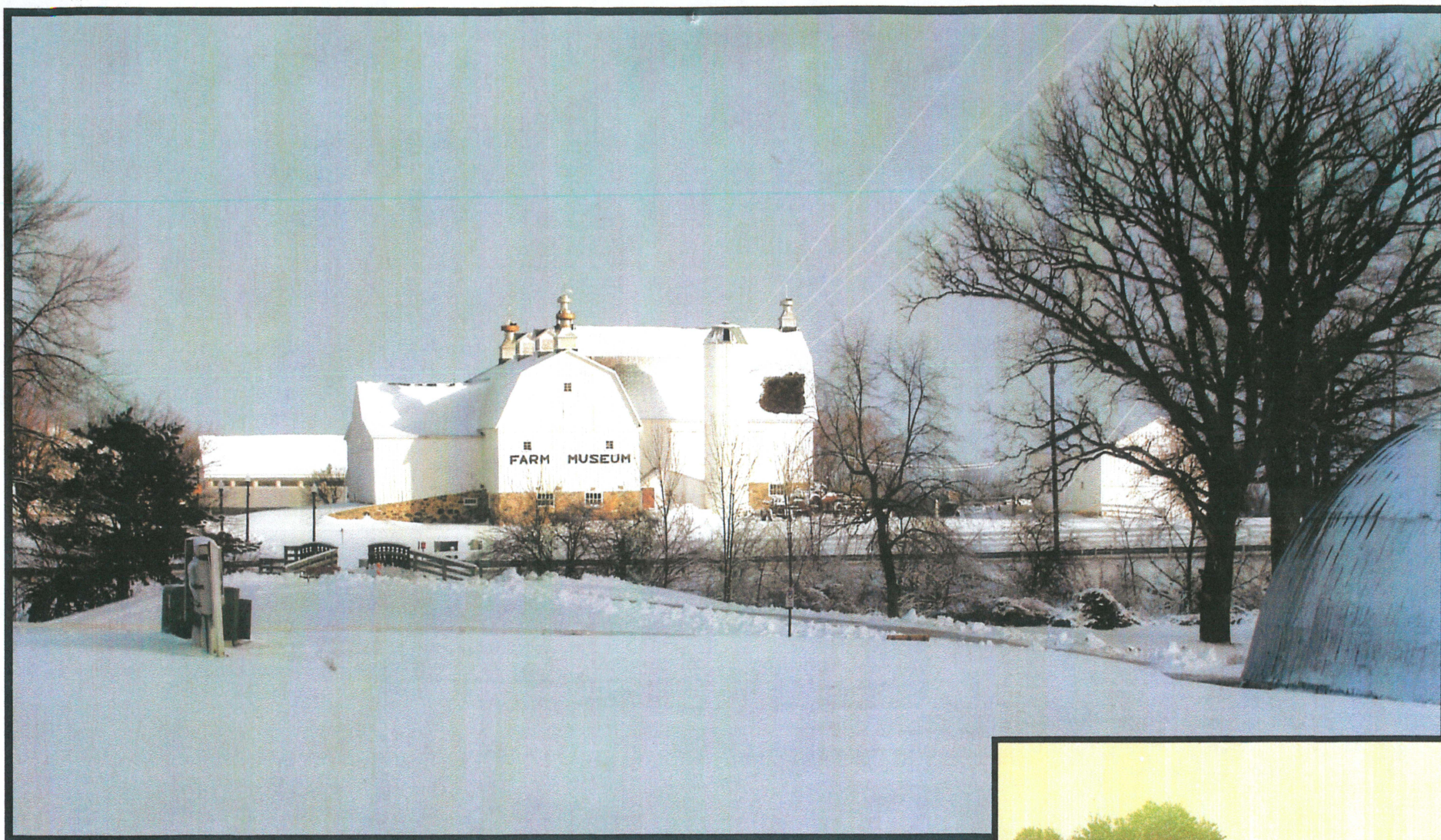
Mudge Farm

Main photo: Late 19th century home of Mudge family. Photo c. 1900. **Left inset:** Original log home on Card Road, built by Isaac Mudge c. 1850. **Right inset:** 1980s photo of the family home.



November 2008

SUNDAY	MONDAY	TUESDAY	WEDNESDAY	THURSDAY	FRIDAY	SATURDAY
						1
2 Daylight Savings Time Ends	3	4	5	6	7	8
9	10	11 Veterans' Day	12	13	14	15
16	17	18	19	20	21	22
23/30	24	25	26	27 Thanksgiving Day	28	29



St. Clair County Infirmary

Main photo: These barns, built in the early 1900s, are located at what is now Goodells County Park and currently serve as home to the St. Clair County Farm Museum. These two barns were used by the St. Clair County Infirmary or 'poor farm' as it was often called. The Goodells Infirmary was in operation for over 120 years, serving county residents from 1873 to 1993. **Right inset:** The original infirmary building built in 1873. In 1914 this building burned to the ground in a horrific fire.





December 2008

SUNDAY	MONDAY	TUESDAY	WEDNESDAY	THURSDAY	FRIDAY	SATURDAY
	1	2	3	4	5	6
7	8	9	10	11	12	13
14	15	16	17	18	19	20
21	22	23	24	25	26	27
Winter Begins				Christmas Day		
28	29	30	31			
			New Year's Eve			

Centennial Farm Program

The Centennial Farm Program was begun by the Michigan Historical Commission in 1948 with support from Detroit Edison Company, Consumers Power Company, local electrical cooperatives and farm groups. It is intended to recognize farms that have remained in the same family for one hundred years or more and highlight the family farm's contributions to Michigan's development.



A Centennial Farm is a working farm of ten or more acres that has been continuously owned by the same family for at least one hundred years. The program recognizes farms that have remained in the same family for one hundred years or more and highlight the family farm's contributions to Michigan's development. There are 6,000 certified Centennial Farms in Michigan, the oldest dating back to 1776.

Farm owners receive a Michigan Centennial Farm certificate and a display marker for the farm. the green and yellow markers are supplied by Michigan electrical utility companies to commemorate the dramatic changes electricity brought to farm operations and family life. Centennial Farm families are eligible for membership in the Michigan Centennial Farm Association, formed by a group of centennial farmers during Farmers' Week at Michigan State University in 1957.

The Michigan Centennial Farm Association serves as an informational channel for centennial farmers. It publishes a quarterly newsletter, provides support for the Centennial Farm Program in the Michigan Department of History, Arts and Libraries, holds an annual meeting and sponsors a number of regional associations that promote communion among centennial farmers. The Association's Memorial Scholarship fund provides an educational scholarship annually to an Association family member.

The Michigan Historical Commission also established a Sesquicentennial Farm Program in 1990 to recognize, upon request, certified Centennial Farms that have been owned by the same family for 150 years or longer. There are 300 certified Sesquicentennial Farms in Michigan.